



JENSEN HUGHES

Tuolumne County CWPP Kick-off Meeting

Darlene Rini, Alice Ann Wetzel, Brad Gillespie, Amelia Pludow | March 2023

Tuolumne County CWPP

Agenda

1. Introduction
2. Review Scope of Work
3. Project Schedule
4. Immediate Action Items
 - Steering Committee
 - Site Visit
 - Public Engagement
5. Project Administration
 - Communication, Invoicing
 - Next Steps



(1)

Introduction

Introductions

Darlene Rini, P.E.
Principal-in-Charge



Experience - 22 years

- + Wildfire Risk Mitigation GSL
- + Code Consulting
- + Community Wildfire Resiliency
- + Collaboration

Alice Ann Wetzel
Project Manager



Experience – 40 years

- + Land Use & Policy Planning
- + Community Engagement
- + Code Consulting
- + Project Management

Brad Gillespie
Wildfire Specialist



Experience - 30 years

- + Wildfire Behavior Analyst
- + Fuels Managem't Specialist
- + Type III Incident Command
- + Operations Section Chief
- + Type III Prescrib'd Burn boss
- + Community Wildfire Resiliency

Amelia Pludow, PhD
Demographer, GIS



Experience - 6 years

- + Wildfire Risk Mitigation
- + Geospatial Analysis
- + Demography
- + Community Wildfire Resiliency

Crystal Kolden PhD
Fire Ecologist, Climate



Experience - 6 years

- + Certified Fire Ecologist, GIS and Remote Sensing Specialist
- + Climatology
- + Firefighter Type II

Sid Beckman
Senior Advisor



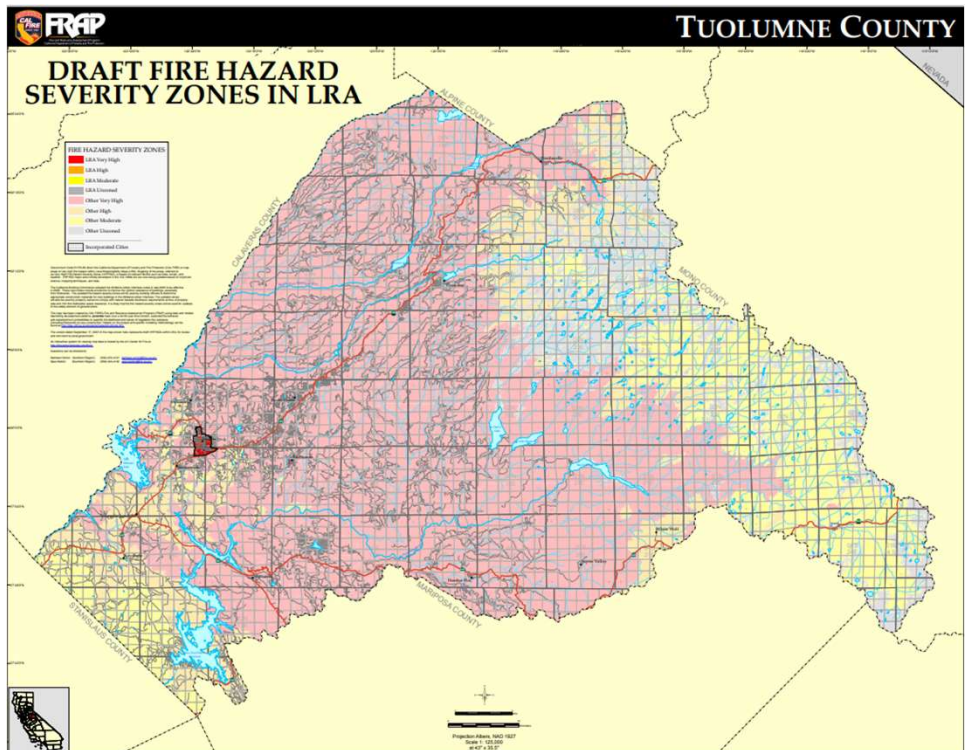
Experience - 40 years

- + Wildfire Behavior Analyst
- + Fuel Treatments Specialist
- + Type II/III Incident Command
- + Operations Chief
- + Community Wildfire Resiliency

Introduction

Tuolumne County & Fire

- + High Fire Prone Environment
 - Rugged mountains and steep terrain
 - Mediterranean climate & windy conditions
 - Majority in Very-High or High FHSZs
- + Key Vulnerabilities
 - Numerous, small isolated communities
 - Limited first responders and emergency services
 - Limited evacuation routes
 - Communication “dead-zones”
 - Seasonal visitors and workers



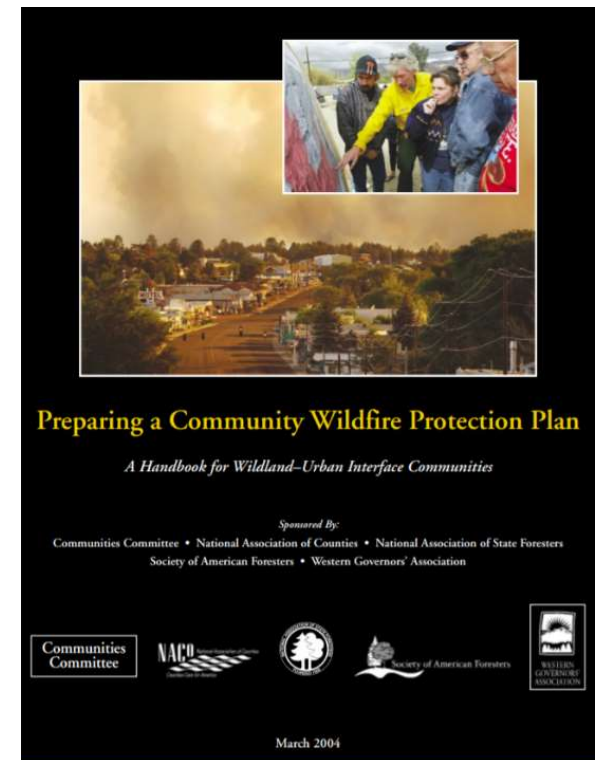
Introduction

Traditional CWPP

+ Minimum Plan Requirements

The *minimum requirements* for a CWPP as described in the HFRA are:

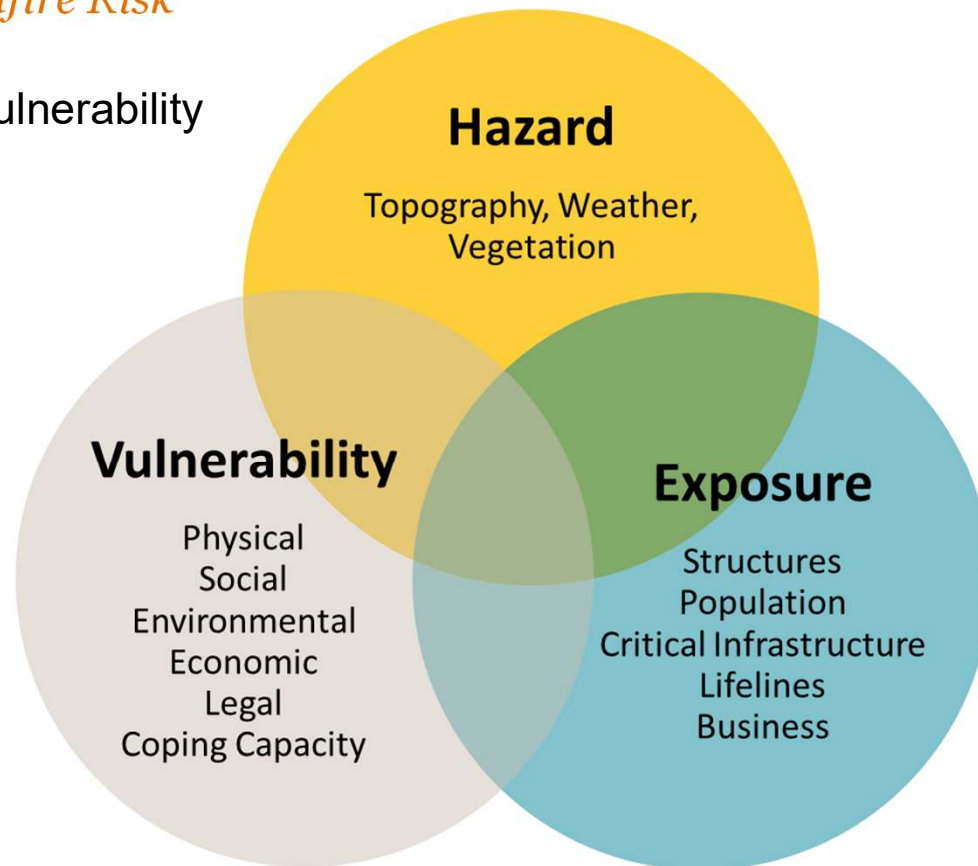
- (1) **Collaboration:** A CWPP must be collaboratively developed by local and state government representatives, in consultation with federal agencies and other interested parties.
- (2) **Prioritized Fuel Reduction:** A CWPP must identify and prioritize areas for hazardous fuel reduction treatments and recommend the types and methods of treatment that will protect one or more at-risk communities and essential infrastructure.
- (3) **Treatment of Structural Ignitability:** A CWPP must recommend measures that homeowners and communities can take to reduce the ignitability of structures throughout the area addressed by the plan.



Introduction

How We Understand Wildfire Risk

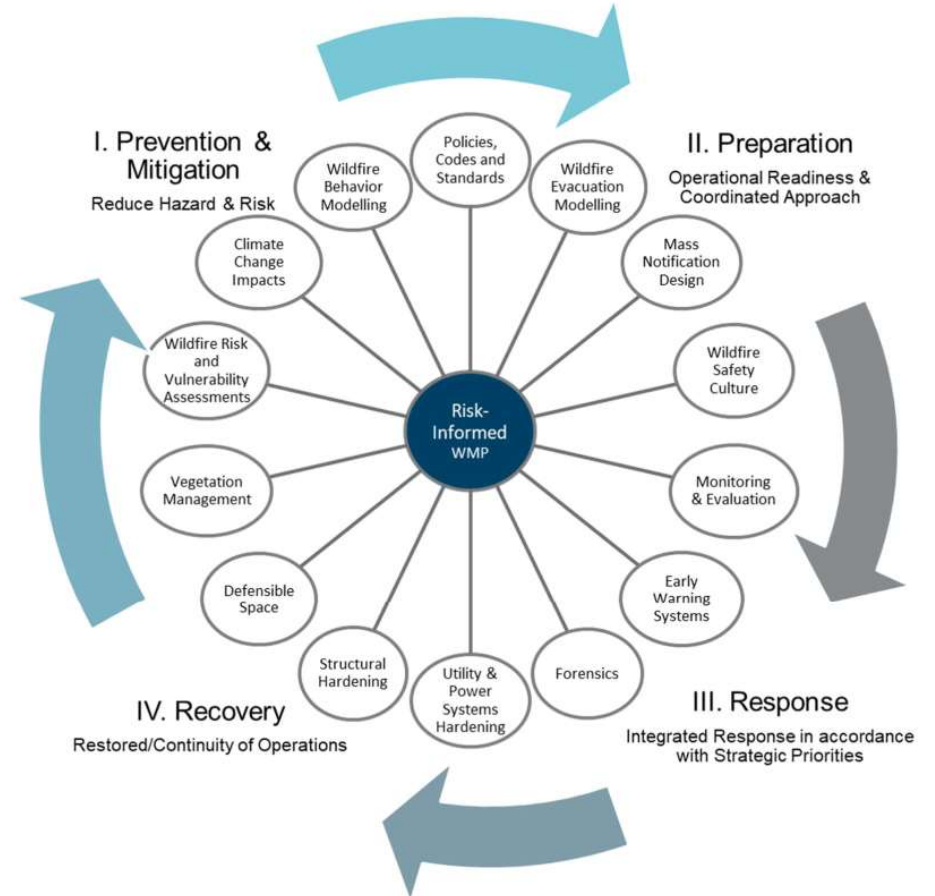
+ Hazard + Exposure + Vulnerability



Introduction

Holistic Planning to Wildfire Resiliency

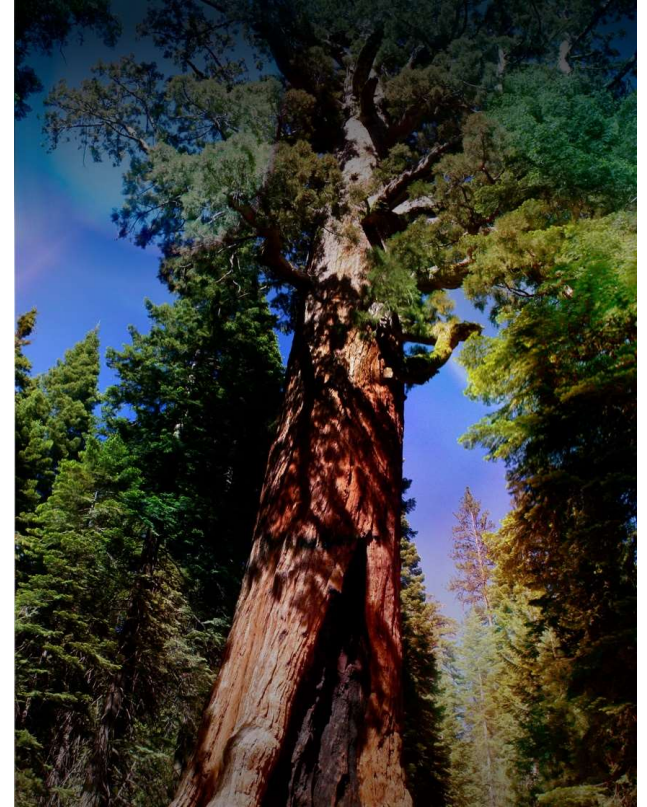
- + **Balance** performance objectives and values
- + **Holistic**, multi-systems
- + **Temporal** – entire disaster life-cycle
- + Interdisciplinary and integrated
- + **Scales** – parcel, neighborhood, community, county, region
- + **Focus on building “community”** capacity
- + **Prioritization** of actions



Expectations

What are your expectations?

- + What's working or not working?
- + What are your main pain points?
- + Area(s) of the County of particular concern?
- + What do you want out of this CWPP?



(2)

Review Scope of Work

Scope of Work

Scope of Work



Project Kick-off



Review Existing Information



Conduct Hazard and Risk Assessment



Conduct Stakeholder Outreach



Mapping (No Scope)



Prepare CWPP



Meetings



Scope of Work

Scope of Work



Project Kick-off

- + Project Kickoff Meeting
- + Steering Committee Inception



Meetings

- + Monthly Progress Meetings



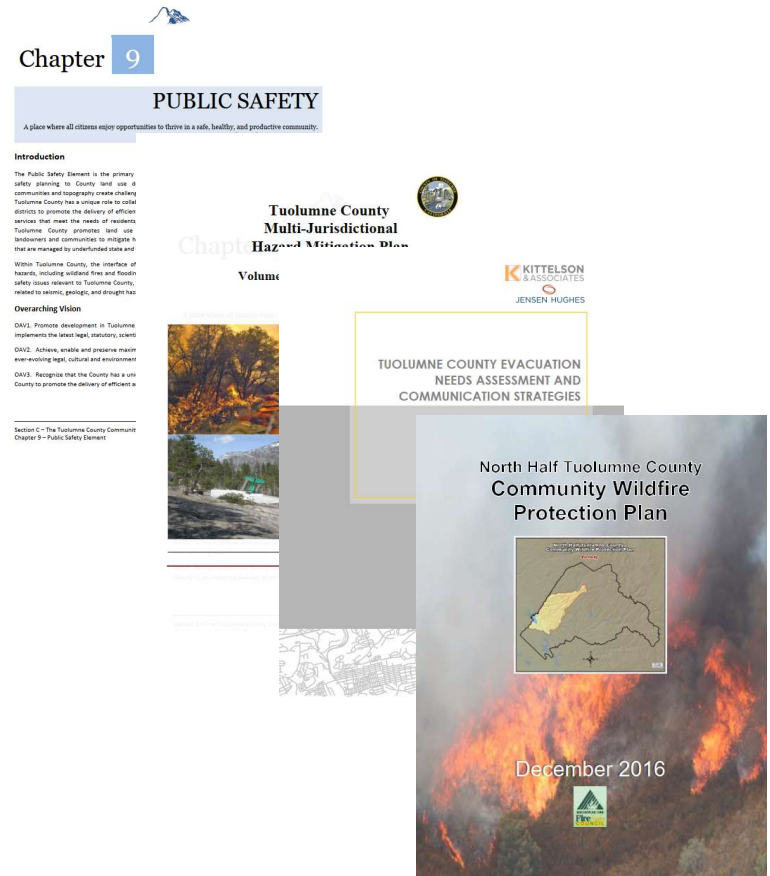
Scope of Work

Scope of Work



Review Existing Information

- + Review relevant policy, planning, and management documents from local, state, and federal sources.
- + Gap analysis
- + Review County digital database



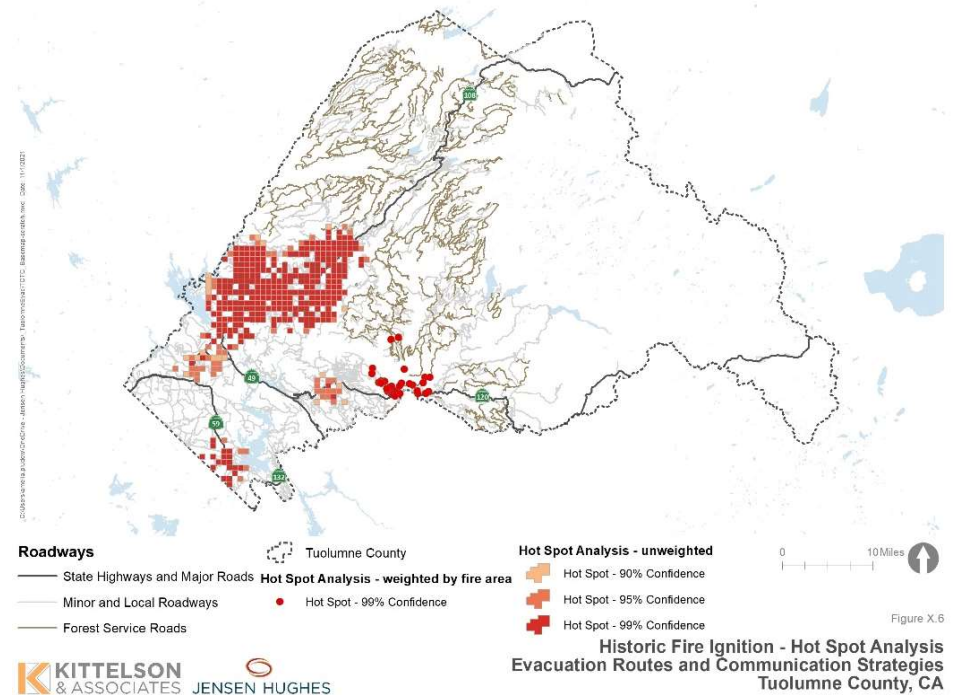
Scope of Work

Scope of Work



Conduct Hazard and Risk Assessment

- + Perform a Wildfire Hazard Assessment
- + Conduct Risk Assessment
- + Conduct a Structural and Communities Protection Assessment
- + Conduct a Loss Risk Assessment



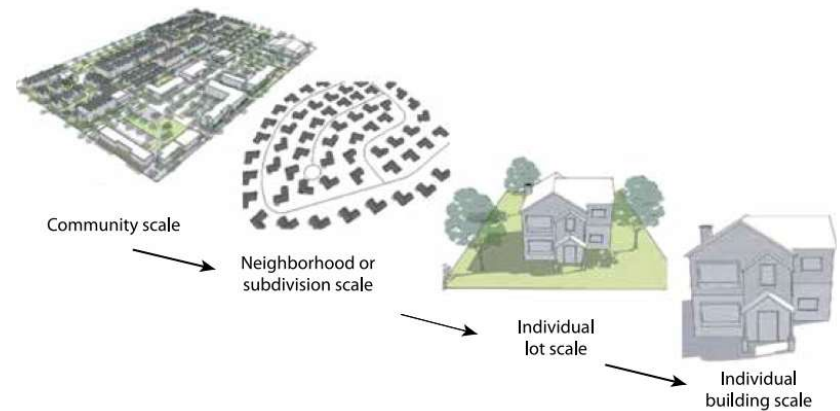
Scope of Work

Scope of Work



Conduct Stakeholder Outreach

- + Support Establishment of Stakeholder Working Group
- + Support development of four (4) public workshops
- + Prepare and administer public survey



Scope of Work

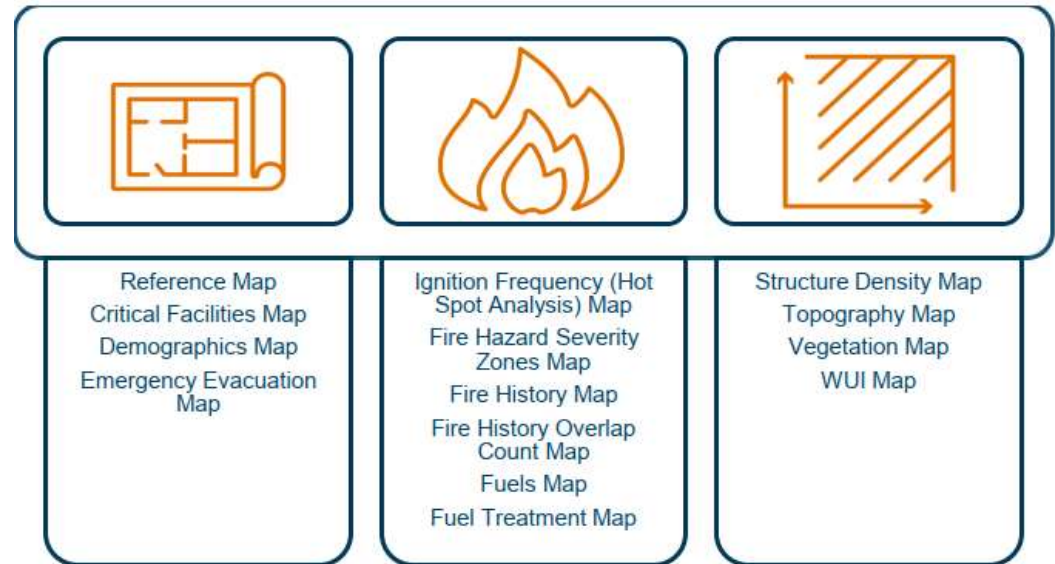
Scope of Work



Mapping (No Scope)

+ How best to coordinate with County GIS?

Sample GIS Wildfire Mapping Products



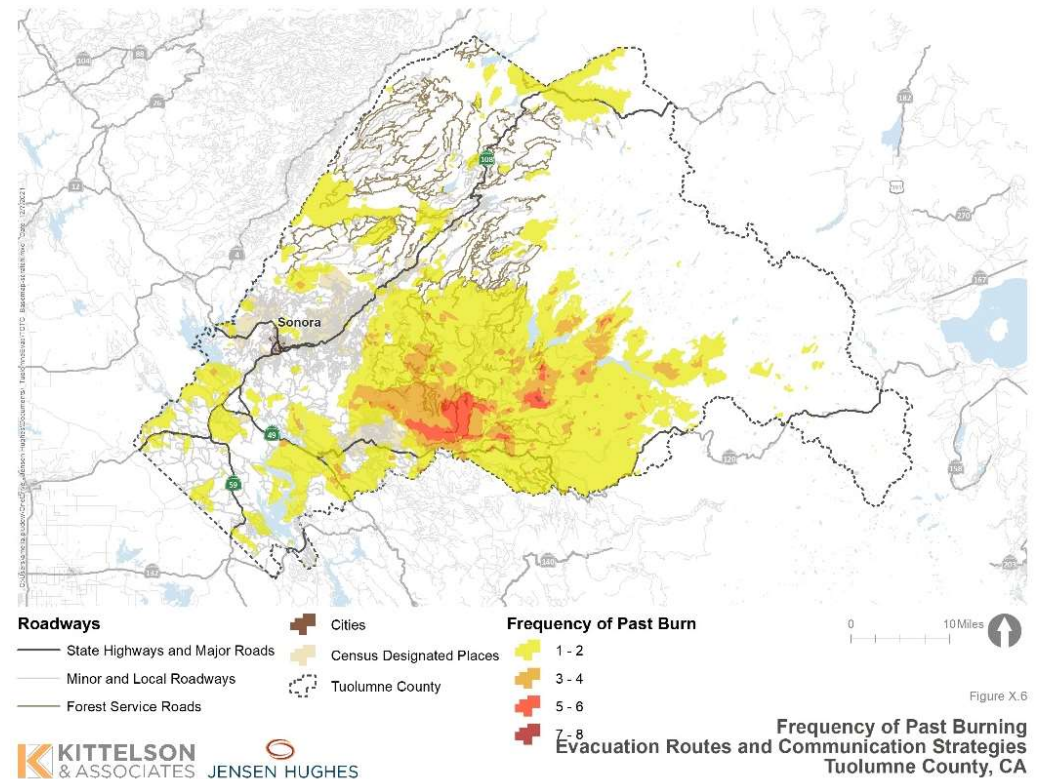
Scope of Work

Scope of Work



Prepare CWPP

- + Integrate output and narratives in Draft Report
- + Recommend mitigation actions and planning
- + Propose monitoring and evaluating practices
- + Evaluate funding source(s)
- + Finalize CWPP



CWPP Development Process



(3)

Project Schedule

12-Month Project Schedule

Project Tasks	Months											
	March	April	May	June	July	August	September	October	November	December	January	February
Task 1: Project Kickoff	K											
Task 2: Review Existing Information												
1. Review existing information												
2. Review county digital database												
Task 3: Conduct Hazard and Risk Analyses												
1. Conduct a wildfire hazard risk assessment			S		S							
2. Conduct a community risk assessment			S									
3. Conduct a structural defensibility assessment												
4. Evaluate and develop community actions												
Task 4: Conduct Stakeholder Outreach				★						★		
Task 5: Mapping												
Task 6: Prepare & Deliver CWPP										D	D	F
Task 7: Meetings	M	M	M	M	M	M	M	M	M	M	M	

16-Month Project Schedule

Project Tasks	Months															
	March	April	May	June	July	August	September	October	November	December	January	February	March	April	May	June
Task 1: Project Kickoff	K															
Task 2: Review Existing Information																
1. Review existing information																
2. Review county digital database																
Task 3: Conduct Hazard and Risk Analyses																
1. Conduct a wildfire hazard risk assessment			S	S	S	S	S									
2. Conduct a community risk assessment			S	S	S	S	S									
3. Conduct a structural defensibility assessment																
4. Evaluate and develop community actions																
Task 4: Conduct Stakeholder Outreach				★									★			
Task 5: Mapping																
Task 6: Prepare & Deliver CWPP																
Task 7: Meetings	M	M	M	M	M	M	M	M	M	M	M	M	M	M	M	M

Key Milestones

Key Milestones (Estimated Timeline)

- + Task 1 – Written Data Requests (March 2023)
- + Task 2 – Basic Hazard and Risk Assessments (April/May 2023)
- + Task 3 – 1st Stakeholder Workshops (June 2023)
 - 2nd Stakeholder Workshops (March 2024)
- + Task 4 – Final Mapping Products (May 2024)
- + Task 5 – Draft CWPP (1st week of April 2024)
 - Final CWPP (June 2024)
- + Task 6 – Kickoff Meeting (March 2023)
 - Core Working Group Meetings (TBD)
 - City Council and County Supervisors Approval Meetings (July 2024)



(4)

Immediate Actions

Immediate Actions

Steering Committee

- + Steering Committee
 - TCFSC
 - TC OES
 - Fire Agencies (Chiefs Association?, CALFIRE?, USFS?)
 - Law Enforcement? (Sheriff?)
- + Additional meetings assumed to occur virtually
- + Schedule in-person meetings?
 - Meeting #1 – 1st Site Visit (April/May 2023)
 - Meeting #2 – Pre-1st Workshop (June 2023)
 - Meeting #3 – Draft CWPP (~April 2024)



Immediate Actions

Site Visit

+ **Purpose**

- Familiarization with local wildfire environmental settings (e.g., topography, fuel conditions)
- Identification of high fire risk areas and places of “concern” by TCFSC, Tuolumne County OES and others
 - Fire risks
 - Vulnerable communities
 - Other concerns
- Identification of existing and planned fuel treatments

+ **Presence of Fire** will be required

+ **Scheduling and availability** – TBD



Immediate Actions

Public Engagement

+ **Public Survey**

- Prepare public survey
- Tentative timeline: May 2023

+ **Planning for 1st Public Workshops**

- Start: April/May 2023
- Location and Facilities
- Advertising
- Workshop materials



(5)

Project Administration

Project Administration

Project Administration and Other Logistics

- + Monthly progress meetings (18 budgeted – 1st Meeting today March 2023)
 - Agenda and Minutes/Action Items

- + Communication Protocols

- + Contract Execution

- + Invoicing
 - Special grant requirements



TCFSC CWPP

Next Steps

- + JH to issue project schedule
- + Establish Steering Committee and Stakeholder Working Group (if different)
- + Steering Committee meetings to be scheduled
- + Review of Actions



Questions?





JENSEN HUGHES



Darlene Rini

Project Director

Director + Wildfire Risk Mitigation

Global Service Leader

darlene.rini@jensenhughes.com

+1 213 412 -1400

Alice Ann Wetzel

Project Manager

aliceann.wetzel@jensenhughes.com

+1 206-800-1403

jensenhughes.com