

Thinning Only

Thinning + Prescribed Fire

No Treatment

Community Wildfire Protection Plan (CWPP) For Tuolumne County 2023



A Bit of Background

NFP, Aug. 2000 - The National Fire Plan: established goals to

- maintaining and restoring fire-adapted ecosystems
- actively responding to severe wildland fires
- Reduce impacts to communities
- ensure sufficient firefighting capacity for the future

HFI, Aug. 2002 – Healthy Forests Initiative: streamlines the process of restoration efforts which includes treatment of hazardous fuels.

HFRA, Dec. 2003 - Healthy Forests Restoration Act: provided support for reducing fuels and restoring forest health, especially in the wildland/urban interface.



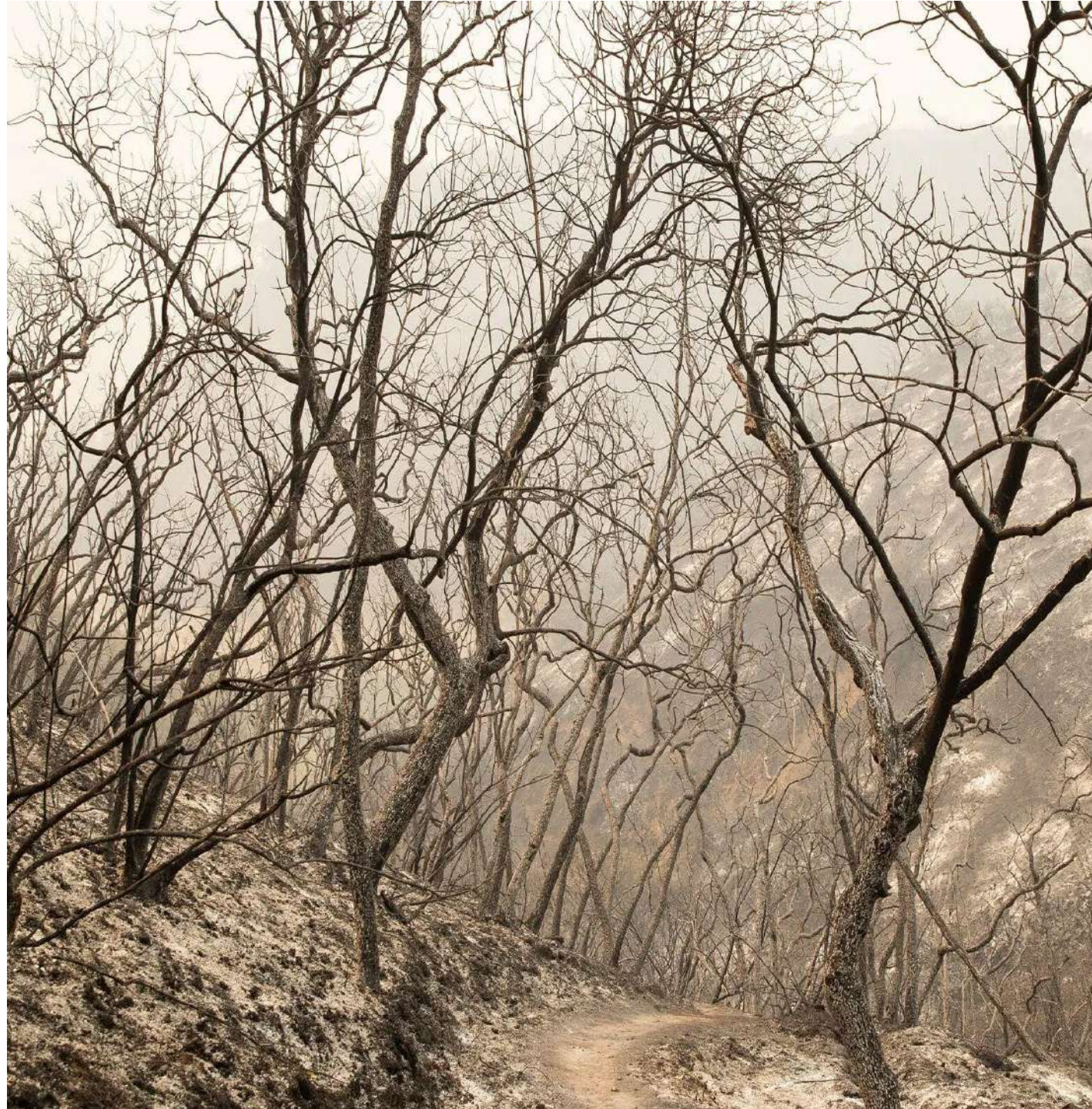
Healthy Forests Restoration Act (HFRA) 2003

The HFRA provides incentives for communities to engage in comprehensive forest planning and prioritization. To utilize federal funding, there must be a **Community Wildfire Protection Plan (CWPP)** in place.

What is Required in a CWPP?

Three minimum requirements per the HFRA and State of California:

- **Collaboration** – Local/state officials, federal agencies, and nongovernmental stakeholders.
- **Prioritized Fuel Reduction** – Identify and prioritize areas for hazardous fuel reduction treatments on both federal and nonfederal lands and recommend types of treatment.
- **Treatment of Structural Ignitability** – Recommend measures that homeowners and communities can take to reduce the ignitability of structures in the plan area.



The ~~REQUIRES~~ requires that three entities must mutually agree to the final contents of a CWPP:

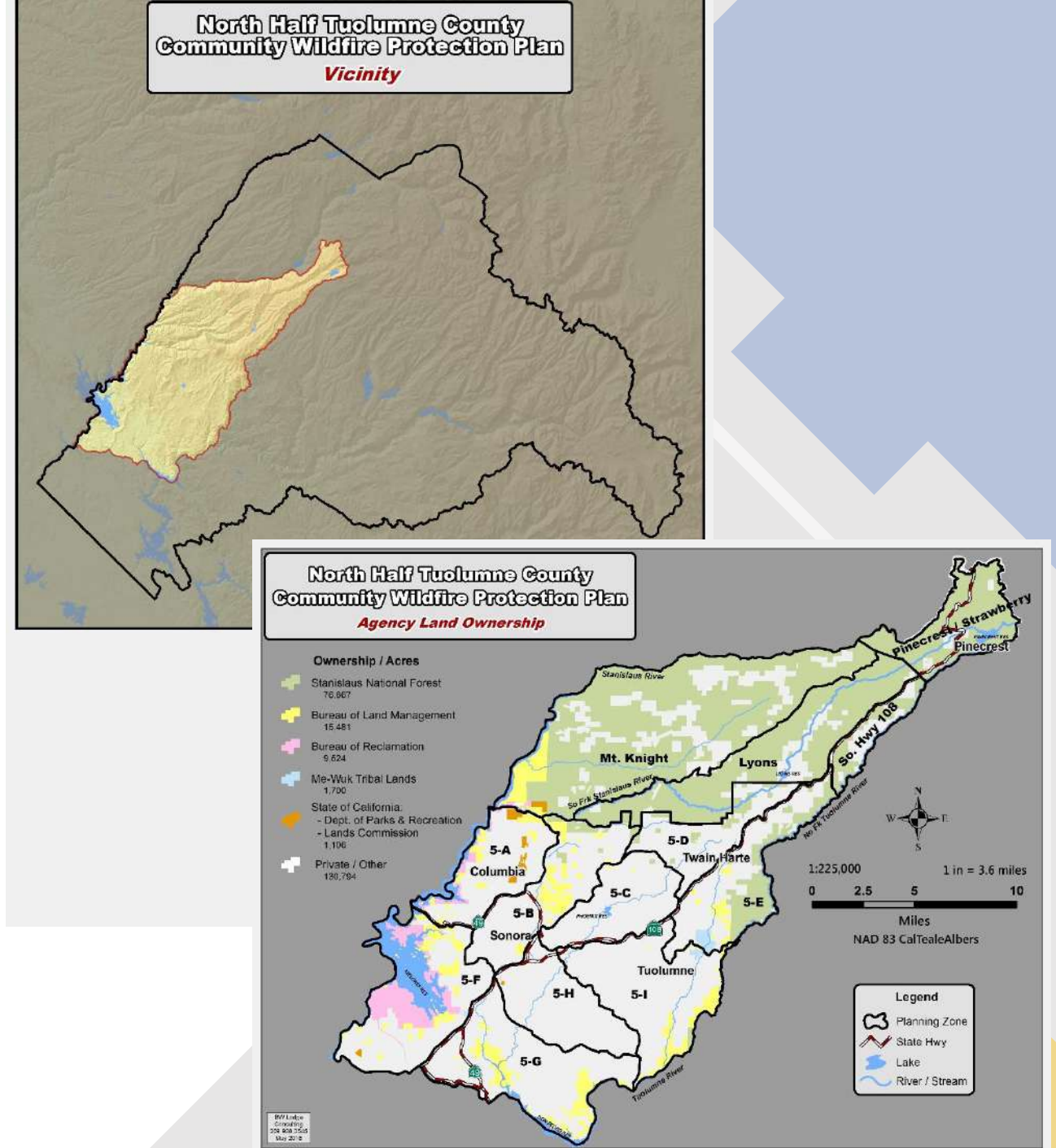
- The applicable local government(s)
- The local fire department(s).
- The state entity responsible for forest management.

In addition, these entities are directed to consult with and involve local representatives of the USFS and BLM and other interested parties or persons in the development of the plan.

North Half Tuolumne County Community Wildfire Protection Plan (CWPP)

December 12, 2004

(Covers the north County geographically.)



CWPP & other related Plans

- Southwest Interface Project (SWIFT) Community Protection Planning, September 2004
- COMMUNITY WILDFIRE PROTECTION PLAN (CWPP) FOR THE Greater Tuolumne City Community, Attachment to the Tuolumne County CWPP, Dated December 14, 2004
- Tuolumne County Wildland Fire Evacuation Plan
- 2005 Highway 108 Strategic Plan



2008 French Fire near Rawhide Road. Photo courtesy Tuolumne County Fire Department

2022, Tuolumne Fire Safe Council received a grant award from the CAL FIRE, Fire Prevention Grants Program, to complete a CWPP update.

The grant ends on March 15th, 2024.



Updating will result in a new CWPP since there has been significant changes in the past 19 years.

This CWPP will cover the entire County.

Key data layers used in the 2004 plan was done in 1996- 1998

- Vegetation fuels conditions have changed
- Weather and Climate data has changed
- Communities have changed
- Asset(s) at risk data has changed
- Fire behavior has changed
- Fire history has changed

Steering Group

Provides support, guidance and oversight of progress.

Approves Goals & Objectives, Planning Units, and the final draft

Bureau of Land Management

CAL FIRE

Chicken Ranch Me Wuk Indians

City of Sonora

County of Tuolumne

Fire Chiefs Association of Tuolumne County

Stanislaus National Forest

Yosemite National Park

Tuolumne Band of the Me Wuk Indians

Tuolumne County Fire

Tuolumne Fire Safe Council



In Summary, the CWPP...

- is a community-based plan
- focused on identifying and addressing local hazards and risks from wildfire.
- determines what is at risk
- provides actions for the community to address wildfire threat.

The CWPP is intended to be a living document and updates are expected as the needs in a community change and evolve.



Jensen Hughes, Inc

Contracted for development of the Community Wildfire
Protection Plan for Tuolumne County, 2023.

